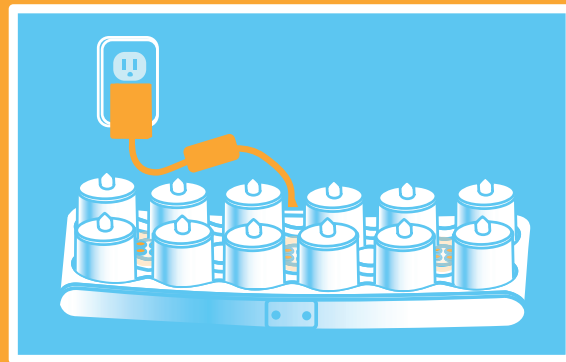
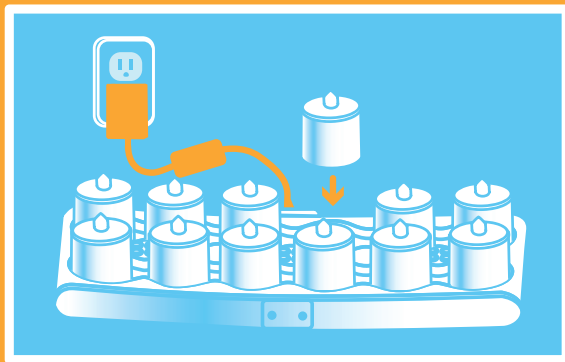


CHARGING INSTRUCTIONS

Firmly place your Smart Candles onto the charging base receiving pins. If you are using more than one charging base, slide them firmly together. (Up to 4 charging bases per power adaptor) If you are using a Smart Docking Station, firmly slide the charging bases into the bays provided. Insert the supplied power adaptor into the charging base or docking station and plug in. The charge indicator lights will illuminate Red when charging and Green when fully charged.



TO CONDITION CANDLES A CHARGE OF 20 HOURS IS REQUIRED

Charge your Smart Candles for 20 hours to complete the conditioning charge.

After 20 hours remove your Smart Candles from the charging base, turn them on and allow them to DISCHARGE COMPLETELY. Your Smart Candles are now ready to be recharged.

IMPORTANT: FAILURE TO FOLLOW THESE INSTRUCTIONS VOIDS MANUFACTURE'S GUARANTEE.

STORAGE: Storage is recommended if your Smart Candles are not going to be used for more than 4-weeks. To store your Smart Candles, fully charge and remove them from the charging base, making sure the on/off switch is in the off position.

smart
candle